

# Keeping you safe on London's transport network

## We continue to run a near **full service**

to make social distancing easier, as well as introducing tools such as the [TfL Go app](#), to help customers plan journeys at quieter times



## We're ensuring people wear **face coverings**

unless exempt. TfL enforcement officers have stopped more than 140,000 people without them from accessing our services



Imperial College London researchers take monthly air and surface samples from stations, Tube trains and buses, and have found



**no** traces of the virus

## More than **1,000** hand sanitising points

are available across the network, with most supplied by leading disinfectant brand Dettol



## Our enhanced **cleaning regime**

includes using hospital-grade cleaning substances that kill viruses and bacteria on contact, and provide ongoing protection



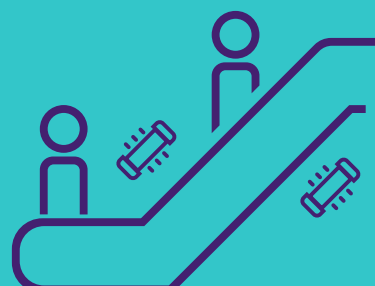
## Air continuously **flows**

through all our trains, trams and buses. On average, air in a Tube train changes every few minutes due to our ventilation systems and frequently opening doors



## **200** UV light sanitising devices

on 110 escalators



For more information, visit our [travel guidance for businesses page](#)