

↑↑ **137%**

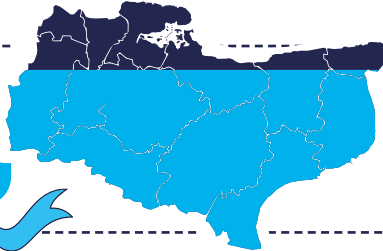
More female train drivers



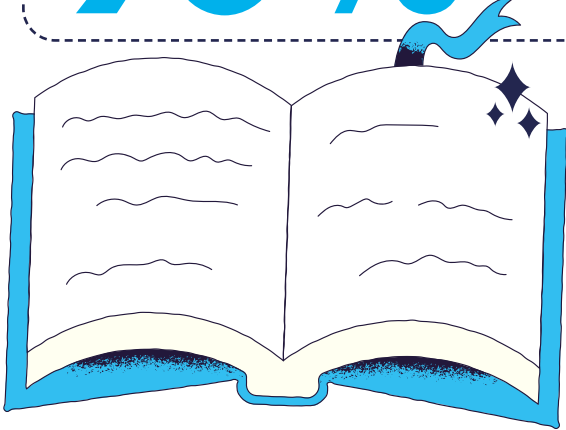
**2000**

Nearly all apprentices are in full time roles.

**90%**

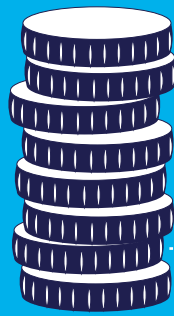


of our workforce live in our local communities



We launched a new Procurement Social Value Charter

**£274,000,000**



of our procurement spend went to suppliers to the local area

**£14,000,000+**  
went to MSMEs

↓ **44%**

reduction in antisocial behaviour and disorder at hotspots



**86,000+**

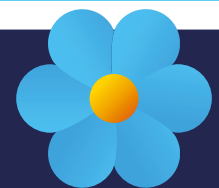
students were supported having worked with over 80 schools



We invested

**£200,000**

on Community Rail Partnerships



**35%**

reduction on scope 1 and 2 CO2 emissions between 2018-19 and 2022-23

