

New clinical research software from Siemens Healthcare paves the way for innovative CT techniques in the UK

Siemens Healthcare has launched *syngo*[®].via Frontier, a new innovation in CT clinical imaging research. The advanced software solution provides direct access to new research prototypes, delivers the means for individual prototype development and enables users to obtain access to an international online community and share experiences with fellow researchers. This paves the way for hospitals and research facilities in the UK to evaluate a greater number of new CT techniques and contribute to international scientific discussion. It can also be used for the development and testing of MR prototypes.

“Research in medical imaging is important, whether that is evaluating new scan protocols, monitoring for treatment success or testing and analysing new advanced imaging software,” states Ben Reed, *syngo* Business Manager UK & I at Siemens Healthcare. “Traditional research software is often installed on a computer away from the everyday reading location. Rather than operating on a standalone basis, *syngo*.via Frontier is integrated with the clinical *syngo*.via server meaning research prototypes can be accessed by any *syngo*.via user in the facility. This enables researchers to easily send and retrieve data for inclusion in research.”

The new *syngo*.via Frontier enables hospitals or research facilities to create their own prototype software, which can be made available to other clinics for their ongoing research. The Prototype Store allows users to easily manage prototypes and trigger new prototype installations. Siemens already provides access to a set of prototypes in the fields of cardiovascular and Dual Energy CT, ready to be added to by Siemens and contributions from external partners in the future.

Ben Reed continues, “The global exchange of data and ideas could transform research endeavours for those with limited resources, encouraging collaboration and perhaps even

facilitating the set-up and management of international multicentre studies. Ambitious users are able to design and implement their own prototypes in order to leverage personal research activities as well as implement the use of 3D printing to bring prototypes to life.”

Some of the research prototypes readily available include Coronary Plaque Analysis, which uses advanced tools to analyse atherosclerotic plaque morphology and to characterise different plaque composites, such as lipid and fibrous. Dual Energy Rho/Z Maps provides algorithms that achieve a direct visualisation and quantification of electron density. Along with this, DE scatter plots allows a novel representation of Dual Energy information with the energy dependencies of materials shown within a Region of Interest being visualised graphically.

With continuous innovation in the field of CT imaging technology and the pioneering *syngo.via* Frontier platform, the launch underlines Siemens Healthcare’s ongoing commitment as a partner of science to hospitals and research facilities across the UK. The technology follows the recent introduction of version VA30 of Siemens Healthcare’s advanced reading and visualisation software, *syngo*[®].*via*.

Siemens Healthcare is one of the world's largest suppliers to the healthcare industry and a trendsetter in medical imaging, laboratory diagnostics, medical information technology and hearing aids. Siemens offers its customers products and solutions for the entire range of patient care from a single source – from prevention and early detection to diagnosis, and on to treatment and aftercare. By optimising clinical workflows for the most common diseases, Siemens also makes healthcare faster, better and more cost-effective. Siemens Healthcare employs some 52,000 employees worldwide and operates around the world www.siemens.co.uk/healthcare.

-Ends-

Media contacts

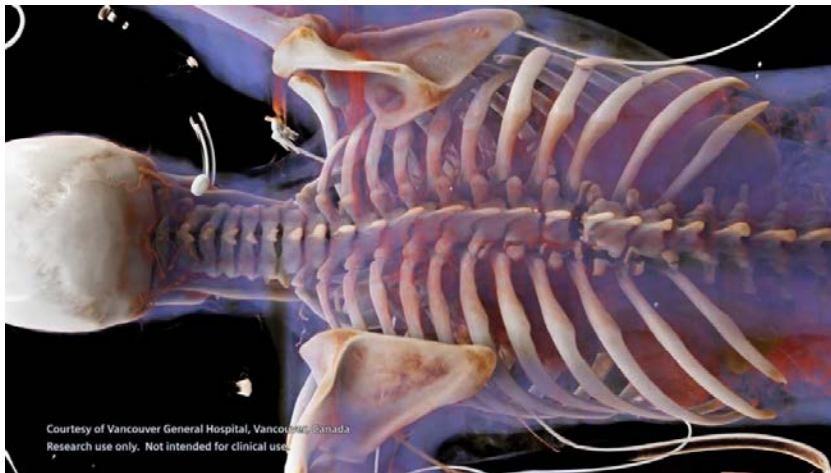
Laura Bennett
Tel: 07808 823598
Email: laura.bennett@siemens.com

Holly Wale / Sean House
Tel: 01225 471202
Email: seanh@mediasafari.co.uk

For further information, please see: www.siemens.co.uk/press

Follow us on Twitter at: www.twitter.com/siemensuknews

Picture caption: Siemens Healthcare launches new clinical research software *syngo*[®].via Frontier, paving the way for innovative CT techniques in the UK



About Siemens

Siemens AG (Berlin and Munich) is a global technology powerhouse that has stood for engineering excellence, innovation, quality, reliability and internationality for more than 165 years. The company is active in more than 200 countries, focusing on the areas of electrification, automation and digitalization. One of the world's largest producers of energy-efficient, resource-saving technologies, Siemens is No. 1 in offshore wind turbine construction, a leading supplier of combined cycle turbines for power generation, a major provider of power transmission solutions and a pioneer in infrastructure solutions as well as automation, drive and software solutions for industry. The company is also a leading provider of medical imaging equipment – such as computed tomography and magnetic resonance imaging systems – and a leader in laboratory diagnostics as well as clinical IT. In fiscal 2014, which ended on September 30, 2014, Siemens generated revenue from continuing operations of €71.9 billion and net income of €5.5 billion. At the end of September 2014, the company had around 357,000 employees worldwide. Further information is available on the Internet at www.siemens.com.