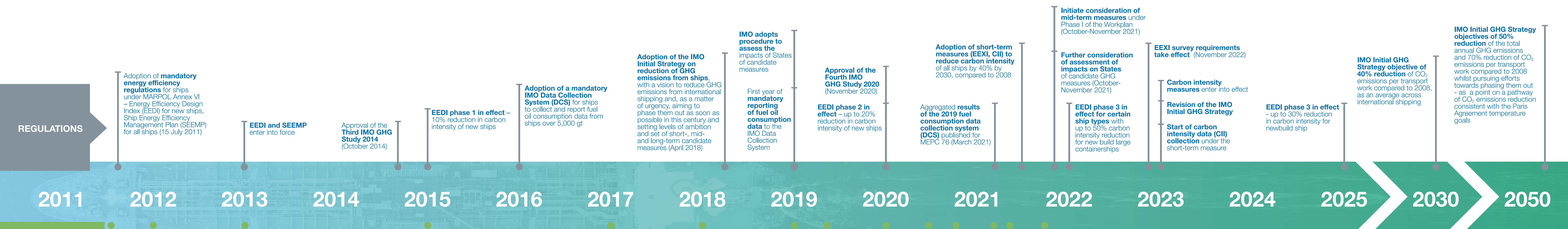


Addressing climate change

A decade of action to cut GHG emissions from shipping



DID YOU KNOW?

The EEDI and SEEMP were the first ever mandatory global GHG reduction regimes for an entire international transport sector.

KEY

EEDI	Energy Efficiency Design Index – with increasingly strict carbon intensity standards for new ships
SEEMP	Ship Energy Efficiency Management Plan - for operators to improve the energy efficiency of all ships
GHG	Greenhouse gases
MARPOL	International Convention for the Prevention of Pollution from Ships
CII	Carbon Intensity Indicator
EEXI	Energy Efficiency Existing Ship Index

